

AUGUST 2024 | ISSUE 4

## WHAT WE DO

PJC Organic is the manufacturer of ProHealthy Turf Organic Products & distributor of soil amendments. We provide product and support to landscapers, schools & municipalities that want to transition from a conventional approach to an All-Natural Organic Turf Care program for the maintenance of their lawns & athletic fields.

### INDUSTRY NEWS

- Why “OMRI Listed” Matters (1)
- Artificial Turf Bill (2)
- Drought Monitor (3)

### LATE SUMMER TURF TIPS (2-3)

PRODUCT PROMO (2)  
Fertilizers, CHARGE-S3, Seed, & Grub Control

### UPCOMING EVENTS (3-4)

### PEST SPOTLIGHT: GRUBS (5)

## INDUSTRY NEWS

## WHY "OMRI LISTED" MATTERS



You've seen the labels and may be wondering “What does OMRI Listed mean and why's it matter?”. So, we took the time to talk with OMRI's Marketing Manager Roger Plant.

### About OMRI

"Founded in 1997, the Organic Materials Review Institute (OMRI) is a 501(c)(3) nonprofit organization providing organic certifiers, growers, manufacturers, and suppliers an independent review of products intended for use in certified organic production, handling, and processing. OMRI reviews input products to determine compliance with the USDA National Organic standards and/or the Canada Organic Regime (COR) standards. Inputs include products such as fertilizers and pest control products for crop production, livestock feed ingredients and health care products, processing aids and sanitizers, and other materials intended for use in organic production."

Mission Statement: “OMRI’s mission is to support the growth and trust of the global organic community through expert, independent and transparent verification of input materials, and through education and technical assistance”. ([history of OMRI](#))

Many farms/producers want to use OMRI listed products to grow crops, because it assures them the product has passed OMRI expert review for use as an input for organic production and improves the efficiency and speed of their organic certification. Therefore, there are thousands of products listed for organic use, that can be found via OMRI's [online search tool](#). It's important to know that because a product is OMRI listed does not mean it is “certified organic.” Only foods, fibers, and feeds are eligible to be called “certified organic” and carry the USDA’s seal for organic products. Input products that are used to grow, process, or produce organic foods, feed, or fibers (including fertilizers and other materials) are typically NOT eligible to carry the USDA seal or use the term “certified organic”.

### Why PJC Chose OMRI

PJC began in 2002 as a full service landscape provider specializing in All-Natural Organic Fertilization services. However, we experienced first-hand the challenges of sourcing a true All-Natural Organic Fertilizer and the difficulty in sorting through fertilizer choices because of what is now called “green washing.” In 2005, we came across Renaissance Fertilizers and their OMRI listed product line. Long story short: we started using their products, had great results, and in 2007 purchased the manufacturing rights. Then, in 2018 we rebranded to PJC ProHealthy Turf. So, the 6-o-6 and 8-o-6 products PJC manufactures have been OMRI listed for a long time! Product integrity is important at PJC and, for those that are like minded, the OMRI seal is a way to reflect that. It sets us above the “green washing” that is even more prevalent today and makes your buying choice easy. Read more about the review and renewal process, as well as PJC products, on our [blog](#).

# NEW OHIO BILL WOULD BAN ARTIFICIAL TURF ON ALL PROFESSIONAL SPORTS FIELDS



by Tyler Madden, WKRC | July 24, 2024

CINCINNATI — As the Bengals hit the practice field, lawmakers in Columbus are looking at possibly changing the rules on what's under their feet. They're calling for a ban on artificial turf being used on all professional sports fields for game days. If this bill passes, big changes could be coming...[read more](#).



## LATE-SUMMER TURF TIPS by Pam Newcombe

As we say every year...this season sure has had its ups and downs with sporadic high temps and humidity. According to the [US Drought Monitor](#), most of the northeast is in favorable conditions with the exception of Northeastern MA, Southern NH, VT and parts of PA and WV being abnormally dry - severe drought.

As we transition out of July heat and into prime turf growing season, optimize your opportunity to grow lush green grass with these late summer turf tips and set yourself up to finish well!

### 1. Soil Test

Every 3 years perform a comprehensive [soil test](#). For accurate results, be sure to test at least 6 weeks after your last fertilizer application and before any late summer product apps. [Run your tests through us](#) to make your product recommendations easy and keep your focus on turf.

### 2. Repair Trouble Spots

Take time to repair trouble spots. PJC Organic recommends a 60/40 loam compost mixed with seed for repairs. Use a 2"x4" board or a leveling rake to blend with surrounding areas. Whether it's a weedy area, bare patch, goal mouth or an area holding water in a client's backyard, premix seed with your top dress blend and give a little TLC to those trouble spots. Consistency is key with trouble areas. Therefore, we recommend repairs each season. Stick with it and the results will speak volumes to your customers.

### 3. Mowing

After approximately 25 hours of use, be sure to [sharpen your mower blades](#)! If you notice your grass has white tips it's an indication that your dull mower blades may be tearing the grass which can lead to water loss and an entry point for disease. Keep grass height of cut at a minimum of 3" to crowd out weeds and return clippings. Keep your mower decks clean between sites and do a daily detail to reduce the spread of disease. For more mowing tips, read our blogs "[What Height to Mow Lawns and Athletic Fields](#)" & "[Best Mowing Practices](#)". Continued on page 3...

## PRODUCT PROMO

### PJC ProHealthy Turf 6-0-6 & 8-0-6

We recommend a fertilizer with "K" coming out of summer to help with stress recovery and root development.



### PJC ProHealthy Turf CHARGE-S3

Made from biochar, molasses, kelp, animal & plant proteins to stimulate biological activity.

### Premium Grass Seed Blends

Turf Type Tall Fescue, Kentucky Blue Grass, Perennial Ryegrass and Fine Fescue blends with high germination rates. Visit our "[Importance of Grass Seed](#)" blog for more info.

### Grub Products

Cedar Oil, nematodes & grubGONE.

REQUEST  
PRICING



# LATE-SUMMER TURF TIPS (continued)

## 4. Core Aerate

When grass is actively growing. You can start aerating as soon as August 1st on irrigated lawns, or as early as August 15th on non-irrigated ones. Core aeration is one of the best methods of alleviating soil compaction there is! Be sure to use hollow tines, as solid tines only perpetuate compaction problems, only at a deeper depth.

## 5. Over Seed

Grass seed is your weed control! Take advantage of those aeration holes and introduce a new crop of turf. Late summer overseeding provides the best window for seedling germination and establishment due to the precipitation from the cooler nights and warm soil temps. As a result, you get a more diverse and resilient turf stand year after year. See PJC's [Blog Sports Field Management with Grass Seed](#) - worth the read.

## 6. Irrigation Audit

If you're watering, test and check all of your irrigation heads to ensure you are maximizing coverage. Additionally, take into account natural rainfall...water is a precious resource! Watering efficiently will help give your established turf and germinating seedlings the best chance to take root and push vigorous shoots. Check out our blog on [best watering practices](#) for more details.

## 7. CHARGE the Soil!

Apply [PJC ProHealthy Turf CHARGE-S3](#) to kick start your turf for fall. Applying directly after aerating puts precious nutrients directly into the root zone giving the microbes a short and long-term feed coming out of summer.

## 8. Fertilize

Apply [PJC ProHealthy Turf Organic Fertilizers](#). This will provide balanced nutrition for soil microorganisms and your soon-to-be flourishing turf. We provide a wide range of fertilizers to make sure you meet your annual fertility needs.

## 9. Calcium

An oft forgotten but essential macro nutrient. Calcium is integral to healthy turf plants and nutrient dense soils. Whether you are looking to increase a low pH, alleviate compaction chemically, chelate essential metal ions for plant uptake or increase cation exchange capacity—we have the product set for you! Use [High Efficiency Lime](#), [Gypsum](#) or [Boost+S3](#) respectively to achieve different calcium needs. Be sure to apply these before the ground freezes. October 15th is usually a safe closing window so this can be done with either late summer or fall applications!

## 10. Scout and Treat Grubs

We'll save the space and send you to our Pest Spotlight on page 4 to learn more.

## UPCOMING EVENTS

### 126th Annual NEPA

#### Fall Conference & Trade Show

A time for professionals from all outdoor industries to meet and grow through education and networking. Receive .8 CEUs and 2 Pesticide Credit at the NEPA Fall Conference and Trade Show. Sessions, Networking Events, and Meet with Commercial Representatives in NH!

Sept 11-13, 2024 | Laconia, NH

come  
see us!



LEARN MORE



### 2024 Fall Field Day

#### Presented by NHLA, NHAA & UNH Extension

Experience hands-on skill building, network, and earn professional credits. Topics include setting a bluestone patio, calibrating a backpack sprayer, using excavator-mounted lasers, tree diseases, management of jumping worms, Japanese pruning, and more! \*Only \$25 per person with lunch included!

Sept 18 | 8 am - 3 pm | Belmont, NH

LEARN MORE



come  
see us!



MORE EVENTS ON PAGE 4...



# UPCOMING EVENTS (continued from p 4)

## 2024 MALP / MAA Fall Field Day

This popular industry-wide event combines specialized education with powerful networking. Hundreds of green industry pros attend to find the latest trends, technology, and equipment to improve productivity and increase profitability. There's something for everyone on your team! \*Fall Field Day is approved for 2 MCLP education credits. More credits available - watch for updates.

Sept 25 | 1 pm - 6 pm | Walpole, MA

LEARN MORE

come see us!



## 2024 Annual Conference & Expo

Join the ENERGY & VISION of a new Nursery and Landscaping Conference & Expo bringing together Green Industry Leaders from across New York State & the Northeast! This year's theme is "Raising The Standards"—focusing on operating by the highest standards to separate from the fly-by-night and pop-up operations that give our industry a bad name.

Oct 20-22, 2024 | Albany, NY

LEARN MORE



NEW YORK STATE  
NURSERY AND LANDSCAPE  
ASSOCIATION, INC.

## Sports Field Forum

A premier event dedicated to advancing education and facilitating powerful connections in sports field management. Key topics include: Best practices for maintaining and improving natural grass fields; Strategies for minimizing athlete injuries through proper field maintenance; Innovations in turfgrass management and safety equipment.

Oct 23 | 8:00 am - 2:00 pm | Worcester, MA

LEARN MORE



## Organic Land Care Accreditation Courses

The Accreditation Course in Organic Land Care is offered in multiple formats to meet the needs of our wide professional audience. Courses in all formats lead to accreditation.

Online, In-Person, and Hybrid  
course options available

LEARN MORE

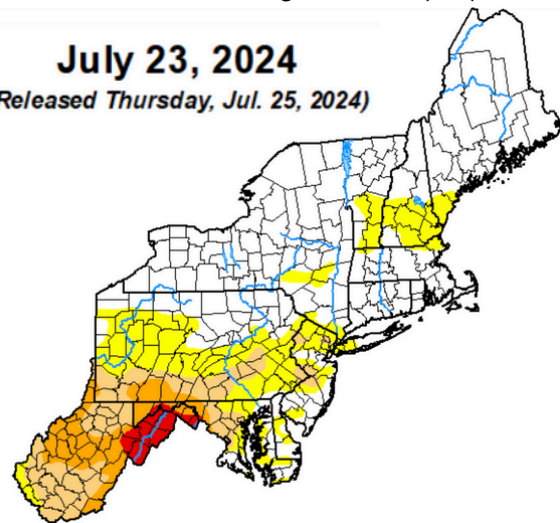


# DROUGHT MONITOR

As mentioned in our Late-Summer Turf Tips (p 2-3)...this season has had sporadic high temps and humidity. Most of the northeast is in favorable conditions with the exception of Northeastern MA, Southern NH, VT and parts of PA and WV being abnormally dry.

July 23, 2024

(Released Thursday, Jul. 25, 2024)



Drought Conditions (Percent Area)

|   | None  | D0-D4 | D1-D4 | D2-D4 | D3-D4 | D4   |
|---|-------|-------|-------|-------|-------|------|
| Current                                 | 61.71 | 38.29 | 18.74 | 8.29  | 2.03  | 0.00 |
| Last Week<br>07-16-2024                 | 61.64 | 38.36 | 19.38 | 9.06  | 1.73  | 0.00 |
| 3 Months Ago<br>04-23-2024              | 98.11 | 1.89  | 0.00  | 0.00  | 0.00  | 0.00 |
| Start of<br>Calendar Year<br>01-02-2024 | 87.20 | 12.80 | 2.50  | 0.67  | 0.00  | 0.00 |
| Start of<br>Water Year<br>09-26-2023    | 88.48 | 11.52 | 1.44  | 0.08  | 0.00  | 0.00 |
| One Year Ago<br>07-25-2023              | 78.89 | 21.11 | 5.68  | 0.40  | 0.00  | 0.00 |

### Intensity:

|                     |                        |
|---------------------|------------------------|
| None                | D2 Severe Drought      |
| D0 Abnormally Dry   | D3 Extreme Drought     |
| D1 Moderate Drought | D4 Exceptional Drought |

The Drought Monitor focuses on broad-scale conditions. Local conditions may vary. For more information on the Drought Monitor, go to <https://droughtmonitor.unl.edu/About.aspx>

### Author:

Rocky Bilotta  
NCEI/NOAA



[droughtmonitor.unl.edu](https://droughtmonitor.unl.edu)

# PEST SPOTLIGHT: GRUBS By Fred Newcombe

In the Northeast, beetles have been laying eggs and grubs are hatching. Establishing a threshold of how many grubs your turf can handle is an important part of ensuring a lawn or athletic field.

Beetles that tend to be of concern include:

- European Chafer: a troublesome species in New Hampshire and eastern Massachusetts. They are night fliers, so you may not know they are around.
- Japanese Beetle: at one time the most widely distributed grub species in New England
- Asiatic Garden Beetle: fairly wide spread in southern New England
- Oriental Beetle: common in the coastal regions

Through the years, we've seen fewer instances of grub damage that warrants control on organically managed turf.

Potential reasons include:

- Healthier Soil Food Web – soils with healthy biodiversity contain predators to feed on beetle eggs—including earthworms, ants, springtails, fungi and bacteria.
- Cultural Management: A higher height of cut encourages deeper rooting. Research has shown that mowing at 3.5" and above helps develop a root mass large enough to withstand grub damage.
- Drought Conditions – grubs require high soil moisture for egg survival. So, grub populations do best in soil that are consistently moist from late June into September. Perhaps another reason to avoid irrigating your lawn throughout the summer and simply allow it to go dormant.
- Mowing High – contributes to a more vigorous root mass, therefore allowing it to better withstand the chance of damage from grubs feeding on the roots.
- The use of Milky Spore, which is a pest specific application, may account for the Japanese Beetle decline.
- Removal of Attractor Plants – we recommend the removal of attractor plants, including: oriental lilies, roses, Japanese Maple, grapes zinnias, and mountain ash.

## Scouting for Grubs

It's best to scout for grubs in late August-Mid September to determine if there is a problem that merits intervention.



1. Cut three sides of a square turf section, about one square foot in size. We recommend performing this in at least 3-4 different spots around the lawn.
2. Fold back the turf and examine the roots about 3 – 4" deep.
3. Count the number of white grubs you find.
4. If you find more than 7 – 8 grubs per area, it is best to treat.

## Treating Grubs Without Harmful Chemicals

Over the last several years, we've treated grubs using cedar oil with a backpack sprayer and have had success. We have also had success using hB nematodes however nematodes are aquatic and require moist soil conditions to move around. Consequently, with how dry it has been the past few years, in addition to water bans, we have not found conditions favorable for nematodes to be an effective treatment option. There is another product on the market called grubGONE but it is a more expensive option.

Need help managing grubs without pesticides? Contact PJC!

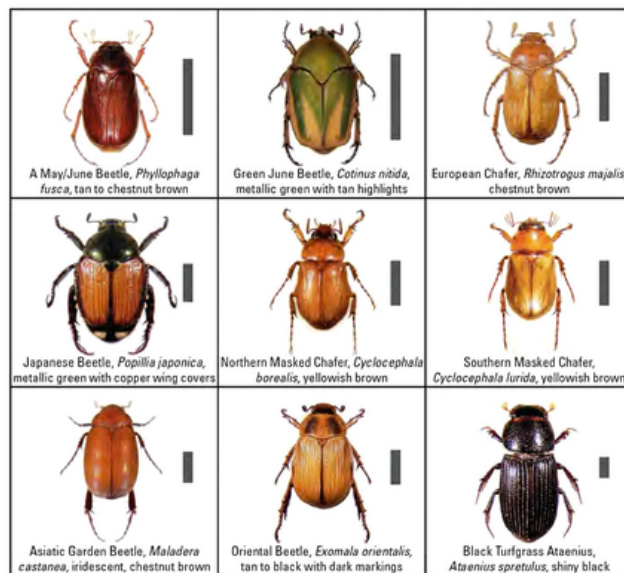


Image Source: Minnesota Department of Agriculture

**KEEP UP!** Follow us on Instagram, Facebook & check out our Blog.  
We post industry news, events, products, & cultural practices.

